

PERSONAL NAVIGATOR

MONDAY, OCTOBER 1, 2012

Sunrise: 7:01 a.m. Sunset: 6:56 p.m.

Evening Attire: Optional Dress Up

All Ashore: 9:30 a.m.

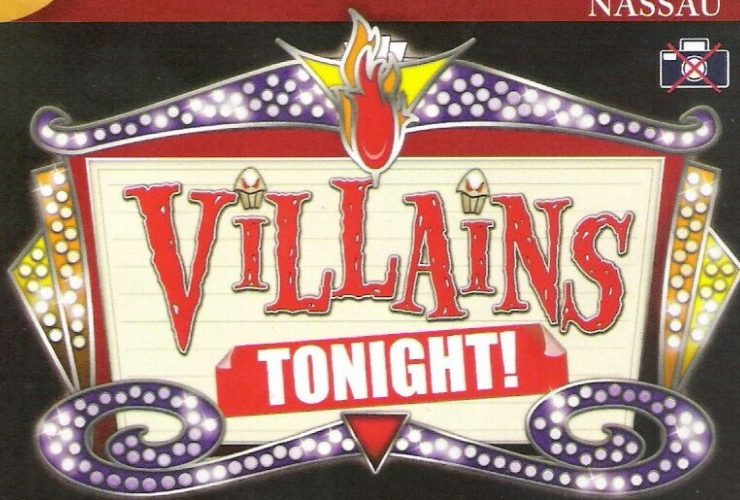
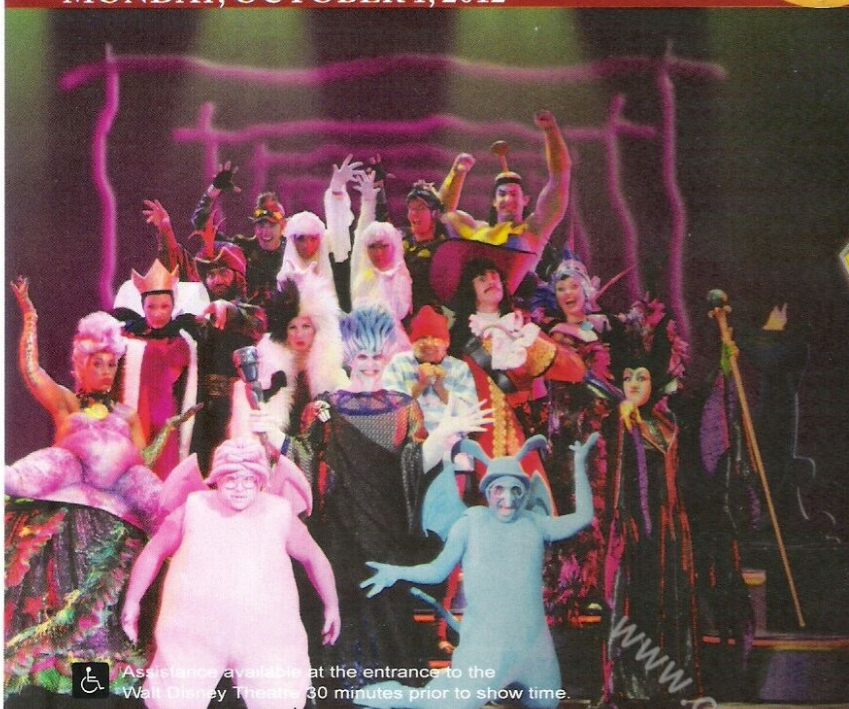
All Aboard: 1:45 a.m.

Gangway: Deck 1, Midship, & Deck 1, Forward


Monday: Partly Sunny High: 79°F/26°C

Tuesday: Sunny High: 82°F/28°C

NASSAU



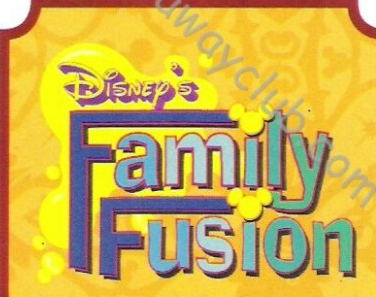
WALT DISNEY THEATRE
DECKS 3 & 4, FORWARD
6:15 P.M. & 8:30 P.M.

 Assistance available at the entrance to the Walt Disney Theatre, 30 minutes prior to show time.

Nassau Port Information

While you will find many great experiences in Nassau, there have been reports of increased crime, including assaults and robberies involving tourists in the area. As in any large city, you'll want to take some basic precautions to make the most of your time ashore.

- Be aware of your surroundings at all times, just as you would in your normal daily activities.
- Avoid short cuts, narrow alleys or poorly lit streets. We recommend that guests only visit the downtown shopping areas and other tourist locations.
- Leave valuables in your room safe and avoid carrying large amounts of cash. Exercise caution when using ATMs. Cameras and handbags should be carried out of sight and secured to your person with a strap.
- Leave passports, air transportation tickets and other travel documents in your room safe. When going ashore, each adult is required to carry a Driver's license, copy of passport or other government-issued photo ID.
- If traveling by taxi, use only licensed taxi operators.
- In general, use the same level of precaution you would use in any tourist destination.
- Most crimes are easier to commit in dark unlit areas. You should stay out of these types of areas and consider returning to the ship before nightfall. If you stay out at night, please be extra vigilant about your personal safety.



GAME SHOW

Bring the entire family and test your Disney knowledge in this interactive, family game show.

10:15 p.m.
 D Lounge,
 Deck 4, Midship

Don't Miss:

Making of the Dream

Evolution, Deck 4, Aft - 11:30 a.m. (Families)
Evolution (18+), Deck 4, Aft - 2:00 p.m. (Adults)

Explore the origins of Disney Cruise Line - and the latest and greatest innovations conjured especially for the Disney Dream, in this fascinating and entertaining behind-the-scenes program.

Disney Animation: Creating a Character

D Lounge, Deck 4, Midship - 2:00 p.m.

Go behind the scenes at Walt Disney Animation Studios and learn the principles that make animation work, and try your hand at creating your own easy animation demonstration in this fun and fascinating enrichment program.

Dream Quest

Evolution (18+), Deck 4, Aft - 10:00 p.m.

Enjoy the adult version of the wildest and wackiest scavenger team event on the seven seas!

Club New Year's Eve

D Lounge, Deck 4, Midship - 10:45 p.m.

"The party don't start till you walk in" - to Club New Year's Eve! Bring your family and help us count down to a brand new year!

Disney Cruise Line
PORT ADVENTURES

Welcome to Nassau, capital of the Bahamas. It is not too late to book an amazing adventure to Blue Lagoon Island, Atlantis, or you could book a semi-submarine ride.

All Port Adventures meet onboard the ship in Nassau. Please check your tour tickets for meeting times and locations.

DINNER MENU Animator's Palate: Pacific Rim Cuisine
 Enchanted Garden: Continental Market
 Royal Palace: French Dinner

DRINK OF THE DAY Yellow Bird (Alcoholic)
 Parrot Song (Non Alcoholic)

IMPORTANT NUMBERS
 Fire/Security: 7-3001
 Medical Emergency: 7-3000
 Health Center: 7-1923

FAMILY ACTIVITY HIGHLIGHTS

FAMILY CRAFTS: SCRAPBOOKING

D Lounge, Deck 4, Midship - 1:00 p.m.

Start creating and collecting your cruise memories at this scrapbooking session. Your Cruise Staff will be on hand with a special gift for all attendees.

DISNEY VACATION CLUB® GROUP PRESENTATION

Evolution, Deck 4, Aft - 3:00 p.m.

Want to learn more about taking magical vacations year after year? Stop by our interactive group presentation to find out more information from a Disney Vacation Club representative.

DISNEY DISCO

D Lounge, Deck 4, Midship - 6:15 p.m.

Join your Cruise Staff and dance along to some of your favorite tunes.

FAMILY DANCE PARTY

Evolution, Deck 4, Aft - 7:30 p.m.

Grab your dancing shoes and hit the dance floor as DJ Marius spins the tunes.

FAMILY SUPERSTAR KARAOKE

D Lounge, Deck 4, Midship - 8:45 & 11:15 p.m.

Calling all singing superstars! Join your Cruise Staff in D Lounge and sing along to your favorite song - fun for everyone.



CLUB NEW YEAR'S EVE

D Lounge, Deck 4, Midship - 10:45 p.m.

"The party don't start till you walk in" - to Club New Year's Eve! Bring your family and help us count down to a brand new year!

ADULT ACTIVITY HIGHLIGHTS

SENSES SPA SEMINARS



Body Sculpt Boot Camp (Fee Applies) - Goofy's Sports Deck, 7:30 a.m.
Wake Up & Stretch Class - Senses Fitness Center, 8:00 a.m.
Good Feet Seminar: Relieving Back Pain - Senses Fitness Center, 8:30 a.m.
Seminar: Burn Fat Faster - Senses Spa & Salon, 3:00 p.m.
Group Cycling (Sign-Up Required) - Senses Fitness Center, 4:00 p.m.
Seminar: Acupuncture for Well Being - Senses Spa & Salon, 4:00 p.m.
Fab Abs - Senses Fitness Center, 5:00 p.m.

TASTING SEMINARS

Mixology - Skyline, 4:00 p.m.

Martini Tasting - Meridian, 4:00 p.m.

Please make reservations for tastings at Guest Services for a nominal fee. Tasting Seminars are only for Guests 21 and older.



MINI GOLF CHALLENGE

Goofy's Sports Deck, Deck 13, Aft, 5:00 p.m.

MIXER

Evolution, Deck 4, Aft, 10:00 p.m.

ART OF THE THEME SHOW TOUR

Meet at Meridian, Deck 12, Aft - 2:45 p.m.

A walking tour that highlights the ship's design, emphasizing Disney culture, themeing and artistry.

NAME THAT 70'S TUNE

687 Pub, Deck 4, Aft - 5:00 p.m.

"At first I was afraid... I was petrified"... know this tune? If so, join your Club Host, Franky, as he tests your knowledge of the 70's classics.



ESPN MONDAY NIGHT FOOTBALL CALL IT!

687 Pub, Deck 4, Aft - 7:30 p.m.

Test your Monday Night Football knowledge as you watch some of the greatest highlights of football history and then "make the call" as to what happens next!



BTRAX (70'S REMIX)

FOLLOWED BY GUEST DJ CHRISTIAN GAMA

Evolution, Deck 4, Aft - 11:15 p.m.

Join your Club Host, Franky, & the Cruise Staff for a 70's disco fever epidemic. With a special appearance by the Evolution Dancers.



\$5,000 MEGA JACKPOT BINGO

**D Lounge,
Deck 4, Midship**

Card Sales - 4:00 p.m.

Game Starts - 4:15 p.m.

Join your Cruise Staff for four cash prize games.

Cover your card in 46 numbers or less, and \$5,000 could be yours.

If not, we continue to play for the highest cash prize of the session!



GOODIE GIVEAWAY BINGO

D Lounge, Deck 4, Midship

Card Sales - 7:15 p.m.

Game Starts - 7:30 p.m.

Join your Cruise Staff for four cash prize games and fun raffle prizes.

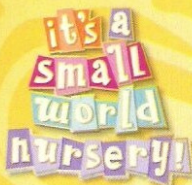
Game #3 is free for all and free goodies for all players!

Also, the snowball jackpot continues to grow and could be won today!

YOUTH ACTIVITIES HIGHLIGHTS

DINE & PLAY

A convenience for families dining at 8:15 p.m., our Youth Activities Counselors will be available at 9:15 p.m. at the entrance of Royal Palace, Enchanted Garden and Animator's Palate dining rooms to bring registered children to join the fun in the Youth Activity areas.



Deck 5 Midship (7-5864) 9:00 a.m. - 1:00 a.m.

OPEN HOUSE

8:00 - 9:00 a.m.

Your chance to see our toddler space, It's A Small World Nursery.



Deck 5 Midship (7-1440) 10:30 a.m. - 12:00 Mid (3 - 12 years old)

BIG TOP FUN FEST

11:30 a.m.

It's the greatest show on Earth. Come re-discover the circus Disney style with clowns, jugglers and classic Disney cartoons.

TOY STORY BOOT CAMP

6:15 p.m.

Ten-hut! The Green Army Men are holding a boot camp and your junior cruiser is invited to join in on the fun.



Deck 5 Midship (7-1445) 9:00 a.m. - 1:00 a.m. (3 - 12 years old)

PISTON CUP CHALLENGE

11:15 a.m.

It's Dinoco time and you're part of the pit crew! Design your own race car and see if you've got what it takes to end up in the Winner's Circle!

SUPER SLOPPY SCIENCE

8:30 p.m.

Join Professor Make-O-Mess in some of the most extreme experiments you will ever see in the world of Super Sloppy Science!



Deck 13 Midship (7-9743) 10:00 a.m. - 1:00 a.m. (11 - 14 years old)

ANIMATION

3:00 p.m.

Learn simple animation techniques and then put your new skills to use by drawing some of your favorite Disney characters.

ANYONE CAN COOK

7:30 p.m.

Create a delicious dish together. Fun for everyone!



Entrance on Deck 4 Forward (7-9417)

11:00 a.m. - 2:00 a.m. (14 - 17 years old)

MAGIC SHOW

9:45 p.m.

Put some magic and wonder in your Dream vacation. Say, "Abracadabra!" and fun is sure to appear!

GHOST VOYAGERS

10:30 p.m.

The ship has come upon some mysterious waters and strange things are afoot. Join a paranormal expert to help investigate the area and track down any evidence of ghostly beings on the ship.

BUENA VISTA THEATRE

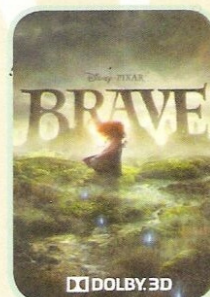
Today's Movies



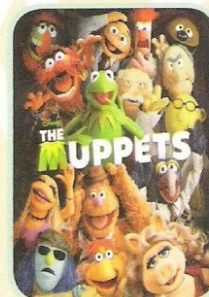
12:00 p.m.
Run Time: 1 hr 40 mins
Rating: PG



2:30 p.m. - **OC**
Run Time: 2 hr 26 mins
Rating: PG-13



5:30 p.m. & 8:30 p.m.
Run Time: 1 hr 31 mins
Rating: PG



10:30 p.m.
Run Time: 1 hr 43 mins
Rating: PG



Get ready for a jammin', slammin', splish splashin' good time at the new Disney Channel Poolside Jam Fest at Sea! Imagine all of your favorite Disney Channel music stars coming together for an afternoon of contests, great music and hot videos, all under the Caribbean sun!

**Deck Stage,
Deck 11, Midship
1:00 p.m.**



GAME SHOW

It's time to play everyone's favorite couples game show - Match Your Mate!

**Evolution (18+),
Deck 4, Aft
10:30 p.m.**

YOUTH ACTIVITIES OPEN HOUSE

Open House is an opportunity for all to come and participate in a variety of exciting activities and free time in the Oceaneer Club, Lab, Edge and Vibe throughout the cruise. During these times secured programming will still be offered in the other venue for those looking to check their children into care.

MORE TO ENJOY WHILE ONBOARD



BOOK YOUR NEXT CRUISE TODAY AND SAVE

Don't waste time, book your next cruise today. You'll save 10%, receive up to a \$200 onboard credit, and pay a reduced deposit! Tune to Channel 8 on your stateroom TV for details and visit the Future Cruise Sales Desk, Deck 4, Midship.



DISNEY VACATION CLUB® GROUP PREVIEW

Want to learn more about taking magical vacations year after year? Please see a Disney Vacation Club representative on Deck 4, Midship, or call 7-2805 from your stateroom phone for more information about our interactive group presentation.

ON DEMAND TV

Watch Disney movies, Hollywood features, ABC Shows, and even captioned content, plus much more "On Demand" for FREE in the comfort of your stateroom! Bookmark your movie and come back to watch it later. Press MENU on your stateroom television remote control and follow the prompts.

ONBOARD AIRLINE CHECK IN

If you would like to have your boarding passes printed for you onboard and have your luggage taken to the airport for you, today at 8:00 p.m. is the last chance to enroll. If you have Disney Cruise Line airport transfer to Orlando International Airport and fly with one of the participating airlines. Please stop at Guest Services Desk, Deck 3, Midship.

FINE DINING RESERVATIONS

Treat yourself to the ultimate culinary experience at sea. At Remy and Palo the enchantment of sea meets with elegance for a once-in-a-lifetime dining experience. Service/Cover charges will apply, please call 7-9734 for reservations to secure the last available spots.

SURF @ SEA

\$0.75 per minute, or save money by buying blocks of time. \$27.50 for 50 minutes, \$40 for 100 minutes and \$75 for 250 minutes. Wireless information sheets are available at Guest Services, Deck 3, Midship. Please note: Due to satellite connectivity, onboard internet service will be noticeably slower than you may be accustomed to and may at times be interrupted or unavailable.



Welcome to Nassau, capital of the Bahamas. It is not too late to book an amazing adventure to Blue Lagoon Island, Atlantis, or you could book a semi-submarine ride. And don't forget, we will be arriving to Disney's Castaway Cay in two days, so plan ahead to ensure your first choice of adventure is available. Also, ask our team about the exclusive Getaway Packages, available onboard only.

All Port Adventures meet onboard the ship in Nassau. Please check your tour tickets for meeting times and locations.

SHOPPING

HAVE YOU SEEN MAUI JIM?

See the world the way it was meant to be seen with Maui Jim's polarized, two lens technology eyewear which provides unmatched protection and comfort. White Caps, Deck 3, Forward.

TAG HEUER TIMEPIECES

Over 150 years of excellence in keeping time, proudly worn all over the world, and available here on the Disney Dream. White Caps, Deck 3, Forward.

NIKE APPAREL DEAL

Buy one piece of any Nike apparel and get another Nike piece 20% off. Polos, shorts, and caps available. You are sure to hit a hole-in-one with this amazing offer! Sea Treasures, Deck 3, Forward.

QUEEN OF GEMS, GEM OF QUEENS

From the elegant style of Cleopatra to the runways of today, come see beautiful Provenance pearls. These Tahitian black and Akoya white naturally-cultured pearls will make you feel like royalty while complimenting your own personal style. Experience the beauty exclusively in White Caps, Deck 3, Forward.

DISCOVER THE VISTA GALLERY SILENT AUCTION

Come place your bid on exquisite, newly arrived auction pieces of some of your favorite Disney characters! Bidding closes at 6:00 p.m. on the final night of the cruise. Vista Gallery, Deck 4, Midship.

TAX AND DUTY FREE

Due to Port Regulations, shops are unable to open when the ship is in port. Shops will be closed all day today, and regular operating hours will resume tomorrow (Tuesday) at 5:30 p.m. We apologize for any inconvenience.

Due to port regulations, when the ship is docked, the stores will remain closed.



PAMPER PACKAGE

50 minute full body Swedish massage, foot and ankle massage, Indian scalp massage and 25 minute facial.
75 minute pamper for \$149.

Senses Spa, Deck 11, Forward, Ext 7-1465.

PROVENANCE GEMS PRESENTS: EXCLUSIVE SNOWFLAKE ZULTANITE

The rarest of Gems in rarest of cuts. The Zultanite Snowflake Pendant by Provenance Gems. Majestically cut by the world renowned Wobito brothers in Canada and beautifully brought to life by our Chief Designer, Marek Chmiel.



WHITE CAPS

Deck 3, Forward

Shutters PROFESSIONAL PORTRAITS TONIGHT!

Lifestyle - Six Guests maximum
Donald Statue - Groups accommodated

5:15 p.m. - 6:00 p.m.

7:15 p.m. - 8:30 p.m.

9:30 p.m. - 10:30 p.m.

**Please note that photos are available for viewing on our interactive photo kiosks approximately five hours after being taken and are only available for purchase during this cruise.*

IMPORTANT INFORMATION

Security Notice

All Guests (including children) who wish to disembark the ship are required to present their Key to the World card at the gangway. A photo ID is also required for those Guests who are 18 years of age or older. Guests under the age of 18 are required to have a Parent, Guardian or other responsible adult sign an authorization form at the time it is given out if they wish to go ashore unaccompanied. Authorization forms are available at the gangways and Guest Services.

Cold and Flu Reminder

Please wash hands frequently and thoroughly, particularly before meals. Contact the Health Center by dialing 7-1923, should anyone in your party become ill.

Corridor Quiet Hours

As a courtesy to all our Guests, please recognize quiet hallway hours from 10:00 p.m. til 8:00 a.m.

Incident Weather

For the safety of all Guests, outdoor events may be changed due to unforeseen weather conditions.

Environmental Message

With Disney's commitment to the Environment, please refrain from throwing anything over the Ship's side. Thank you!

No Reserved Seats Policy

As a courtesy to all our Guests, we kindly advise that the saving of seats is not permitted in the Walt Disney Theatre, and the saving of the sun loungers is not permitted on Deck 11, 12 and 13. Items left unattended will be returned to lost and found at Guest Services, Deck 3 Midship.

Smoking

For the comfort of our guests the following areas are designated as Smoking areas:

- Deck 13, Forward, port side, by "Currents"
- Deck 12, Aft, port side outdoor area that is accessible through the Meridian Lounge
- Deck 4, Aft, port side from 6:00 p.m. to 6:00 a.m. only (all of Deck 4 is no smoking from 6:00 a.m. to 6:00 p.m.)
- Smoking is permitted on stateroom verandahs. Smoking is prohibited inside all guest staterooms. Guests found smoking in their staterooms will be charged a \$250 stateroom recovery fee.

Walt Disney Theatre

Theatrical performances may use artificial fog, strobe lights, pyrotechnics and other special effects. For the safety of our performers and the comfort of those around you, the use of any photography, video recording devices or any electronic equipment is prohibited.

Verandah Safety

Please do not leave any combustible materials on your balcony when not present in your stateroom for safety reasons.

DD/CL/4D/163/09.30.2012/RB/©DISNEY

Morning	8:30	8:45	9:00	9:15	9:30	9:45	10:00	10:15	10:30	10:45	11:00	11:15	11:30	11:45	12:00	12:15	12:30	12:45	1:00	1:15	1:30
FUNNEL VISION	Classic Cartoons (G) Funnel Vision			Snow White (G) Funnel Vision			Virtual Tour Funnel Vision			Iron Uprising (G) Funnel Vision			Jam Fest at Sea								
MOVIES	The Odd Life of Timothy Green (PG) Buena Vista Theatre																				
CHARACTER	Princesses Atrium			Minnie Dk 4, Balcony			Daisy Dk 4, Balcony			Minnie Dk 4, Balcony			Donald Atrium								
FUN FOR ALLAGES	Making of the Dream Evolution						Disney Cruise Line Trivia D Lounge						Family Crafts: Scrapbooking D Lounge								
ADULTS	Friends of Bill W. Outlook			Seminar: Relieving Back Pain Senses Fitness Center			Youth Activities Open House Vibe			Youth Activities Open House Vibe			Family Crafts: Scrapbooking D Lounge								
VIBE	Youth Activities Open House						Hangin' in Vibe						Gender Wars								
EDGE	Youth Activities Open House						Piston Cup						Lunch								
OCEANEER LAB	Animation Antics						Piston Cup						Lunch								
OCEANEER CLUB	Youth Activities Open House "Puzzle Playtime" 9:30 a.m. - 10:00 a.m.						Adventures to Neverland			Memory Wall			Big Top Fun Fest			Lunch			Magic Playfloor		

Afternoon	1:45	2:00	2:15	2:30	2:45	3:00	3:15	3:30	3:45	4:00	4:15	4:30	4:45	5:00	5:15	5:30	5:45	6:00	6:15	6:30	6:45						
FUNNEL VISION	The Little Mermaid (G) Funnel Vision			Pixar Shorts (G) Funnel Vision			Hercules (G) Funnel Vision																				
MOVIES	The Avengers (PG-13) 2D Version Buena Vista Theatre						Brave (PG) DOLBY 3D Buena Vista Theatre																				
CHARACTER	Princess Gathering Lobby Atrium			Minnie Dk 4, Balcony			Minnie Atrium			Daisy Preludes			Belle Atrium			Donald Preludes			Cinderella Atrium								
FUN FOR ALLAGES	Disney Animation: Creating a Character D Lounge			Disney Vacation Club Presentation Evolution			Bingo Pre-Sales			\$5,000 MEGA Jackpot BINGO D Lounge			Disney's Mirror D Lounge			Live Music with The Dreamers Lobby Atrium - Live Music			Disney Disco D Lounge								
ADULTS	Making of the Dream Evolution			Art of The Theme Show Tour Meet at Meridian			Live Guitar with David Kenny Quiet Cove - Live Music			Name That 70's Tune 687 Pub			Closest to the Pin Competition Goofy's Sports Deck			Burn Fat Faster Senses Spa & Salon			Live Guitar Quiet Cove			Group Cycling Sense Fitness Center			18*21 Mini Golf Goofy's Sports Deck		
VIBE	Sports Simulator			Animation			Sports Deck			Super Sloppy Science																	
EDGE	Sports Simulator			Animation			Sports Deck			Super Sloppy Science																	
OCEANEER LAB	Get the Hook			Magic Playfloor			Youth Activities Open House "Super Sloppy Science" 4:00 p.m. - 4:45 p.m.			Mirror, Mirror D Lounge			Dinner			Anyone Can Cook											
OCEANEER CLUB	Aloha Luau			Cruisin' with Crush			Magic Playfloor			Once Upon a Time			Dinner			Toy Story Boot Camp											

Evening	7:00	7:15	7:30	7:45	8:00	8:15	8:30	8:45	9:00	9:15	9:30	9:45	10:00	10:15	10:30	10:45	11:00	11:15	11:30	11:45	12:00	
FUNNEL VISION	NFL: Chicago Bears vs. Dallas Cowboys Funnel Vision (Subject to blackouts & satellite reception)																		The Lion King (G) Funnel Vision			
MOVIES	Brave (PG) DOLBY 3D Buena Vista Theatre						The Muppets (PG) Buena Vista Theatre															
CHARACTER	Mickey Dk 4, Balcony		Daisy Preludes		Mickey Dk 4, Balcony		Goofy Dk 4, Balcony		Mickey Dk 4, Balcony		Donald Preludes		Mickey Dk 4, Balcony		Aurora Atrium		Minnie Atrium		Donald Preludes		Cinderella Atrium	
FUN FOR ALLAGES	Bingo Pre-Sales		Goodie Giveaway BINGO D Lounge		Villains Walt Disney Theatre		Live Music with The Dreamers Lobby Atrium - Live Music		Family Fusion D Lounge		Family Superstar Karaoke D Lounge		Family Dance Party Evolution		Family Superstar Karaoke D Lounge		Live Piano with Tom Scott Lobby Atrium - Live Music		Family Superstar Karaoke D Lounge		Family Superstar Karaoke D Lounge	
ADULTS	ESPN MNF Call It! 687 Pub		NFL: Chicago Bears vs. Dallas Cowboys 687 Pub (Subject to blackouts & satellite reception)		Dream Quest Evolution		Match Your Mate Evolution - Game Show		8 Trax feat. the Evolution Dancers Evolution		Trilogy LIVE District Lounge - Live Music		Live Piano with Tom Scott District Lounge - Live Music		Trilogy LIVE District Lounge - Live Music		18*21 Mixer Evolution		Trilogy LIVE District Lounge - Live Music		Live Music with Trilogy District Lounge - Live Music	
VIBE	Teen AquaDuck			Pump It Up			Magic Show			Ghost Voyagers			Gender Wars									
EDGE	Anyone Can Cook			Tween AquaDuck			That's Hilarious!			Pirates of the Caribbean: Tides of Fortune			Magic Playfloor									
OCEANEER LAB	Magic Show			Super Sloppy Science			Pirates of the Caribbean: Tides of Fortune			Magic Playfloor												
OCEANEER CLUB	Little Einsteins			Magic Playfloor			Camp Rocking Out			Movie Time												

Symbol for activities that will be repeated during the cruise

FOLD

Fold along the dotted lines and take me with you so you don't miss any of the fun!

FOLD

IN THE SPOTLIGHT SERIES

SOLVE IT! SERIES

JUMP UP! SERIES

CREATE & INVENT SERIES

OPEN HOUSE

CLUBHOUSE SERIES

STORYBOOK SERIES

MONDAY, OCTOBER 1, 2012 - NASSAU, BAHAMAS

BUENA VISTA THEATRE



12:00 p.m.
Run Time: 1 hr 40 min
Rating: PG



2:30 p.m. - **CC**
Run Time: 2 hr 26 min
Rating: PG-13



5:30 p.m. & 8:30 p.m.
Run Time: 1 hr 31 min
Rating: PG



10:30 p.m.
Run Time: 1 hr 43 min
Rating: PG

Character Appearances

PRINCESS GATHERING
Lobby Atrium
9:00 a.m. & 3:30 p.m.
(Ship's photographers available for the 9:00 a.m. gathering only.)

TINKER BELL
Lobby Atrium - 9:15 a.m.

MINNIE MOUSE
Deck 4, Balcony - 9:15 a.m., 10:15 a.m. & 3:45 p.m.
Lobby Atrium - 4:45 p.m., 7:15 p.m. & 9:45 p.m.

DAISY DUCK
Deck 4, Balcony - 9:45 a.m.
Preludes - 5:00 p.m. & 7:30 p.m.

DONALD DUCK
Lobby Atrium - 1:00 p.m., Preludes - 5:30 p.m., 8:00 p.m. & 9:45 p.m.

MICKEY MOUSE
Deck 4, Balcony - 5:00 p.m., 7:15 p.m. & 9:30 p.m.

BELLE
Lobby Atrium - 5:15 p.m.



For details of daily Disney character appearances, refer to the character line in your Navigator Grid or the digital character board in the Lobby Atrium.

YOUTH ACTIVITIES THEMED EXPERIENCES

CLUBHOUSE SERIES
focuses on movement and features content which appeals to younger children.

STORYBOOK SERIES
is designed with a strong connection to the Disney classic stories.

JUMP UP! SERIES
includes large ground games & movement-oriented activities.

CREATE & INVENT SERIES
will have a tactile focus allowing children to create and admire their work.

IN THE SPOTLIGHT SERIES
focuses on children's stage presence with lots of activities and entertainment.

SOOLVE IT! SERIES
are less active, but will challenge children with problem solutions based activities.

WIN THE SPOTLIGHT SERIES

focuses on children's stage presence with lots of activities and entertainment.

are less active, but will challenge children with problem solutions based activities.

SHIP DIRECTORY

activities for families, adults and children of all ages to enjoy together.

YOUTH ACTIVITIES	
DISNEY'S OCEANEER CLUB	DECK 5, Mid 10:30 A.M. - 12:00 MID
DISNEY'S OCEANEER LAB	DECK 5, Mid 9:00 A.M. - 1:00 A.M.
EDGE	DECK 13, Mid 10:00 A.M. - 1:00 A.M.
VIBE	DECK 4, Fwd 11:00 A.M. - 2:00 A.M.
IT'S A SMALL WORLD NURSERY	DECK 5, Mid 9:00 A.M. - 1:00 A.M.
RECREATION	
AQUADUCK	DECK 12, Mid 9:00 A.M. - 12:00 MID
DONALD'S POOL	DECK 11, Mid 6:00 A.M. - 12:00 MID
GOLF/SPORTS SIMULATORS	DECK 13, Aft 11:00 A.M. - 6:00 P.M.
GOOFY & MAX'S MINI GOLF	DECK 13, Aft 8:00 A.M. - 10:00 P.M.
GOOFY'S SPORTS DECK	DECK 13, Aft 12:00 A.M. - 6:00 P.M.
MICKY'S POOL	DECK 11, Mid 6:00 A.M. - 12:00 MID
MICKY'S SLIDE	DECK 11, Mid 9:00 A.M. - 7:00 P.M.
MIDSHIP DETECTIVE AGENCY	DECK 5, Mid 8:00 A.M. - 11:00 P.M.
NEMO'S REEF	DECK 11, Mid 9:00 A.M. - 7:00 P.M.
PORT ADVENTURES DESK	DECK 5, Mid 8:00 A.M. - 11:00 A.M.
QUIET COVE POOL	DECK 11, Fwd 6:00 A.M. - 8:30 P.M.
SENSES FITNESS CENTER	DECK 11, Fwd 6:00 A.M. - 10:00 P.M.
GENERAL INFORMATION	
ARR-CADE	DECK 11, Aft 24 HOURS
DISNEY VACATION CLUB	DECK 4, Mid 9:00 A.M. - 11:00 A.M.
FUTURE CRUISE SALES DESK	DECK 4, Mid 5:30 P.M. - 10:00 P.M.
GUEST SERVICES	DECK 3, Mid 8:00 A.M. - 10:00 A.M.
MEDICAL HEALTH CENTER	DECK 1, Fwd 3:00 P.M. - 10:00 P.M.
PRELUDES	DECK 3, Mid 24 HOURS
SENSES SPA AND SALON	DECK 11, Fwd 9:30 A.M. - 11:00 A.M.
SHUTTERS PHOTO GALLERY	DECK 4, Mid 5:45 P.M. - 6:30 P.M.
	8:00 A.M. - 10:00 P.M.
	5:00 P.M. - 11:00 P.M.

SHIPPING
DUE TO PORT REGULATIONS, SHOPS ARE UNABLE TO OPEN WHEN THE SHIP IS IN PORT. SHOPS WILL BE CLOSED ALL DAY TODAY, AND REGULAR OPERATING HOURS WILL RESUME ON TUESDAY. WE APOLOGIZE FOR ANY INCONVENIENCE.

DINNER MENNER
Animators' Palace: Pacific Rim Cuisine
Enchanted Garden: Continental Market
Royal Palace: French Dinner
Dining Times: 5:45 p.m. & 8:15 p.m.

OF THE DAY DRINK
Yellow Bird (Alcoholic)
Parrot Song (Non-Alcoholic)

WEATHER FORECAST
Monday: Partly Sunny
High: 79 / 26°C
Tuesday: Sunny
High: 82 / 28°C

Evening Attire: Optional Dress Up

DINING & LOUNGES

BREAKFAST	
CABANAS CONTINENTAL	DECK 11, Aft 7:00 A.M. - 7:30 A.M.
CABANAS	DECK 11, Aft 7:30 A.M. - 10:30 A.M.
ENCHANTED GARDEN	DECK 2, Mid 8:00 A.M. - 10:00 A.M.
ROYAL PALACE	DECK 3, Mid 8:00 A.M. - 9:30 A.M.
LUNCH	
CABANAS	DECK 11, Aft 12:00 P.M. - 2:00 P.M.
PIZZERIA AT CABANAS	DECK 11, Aft 2:00 P.M. - 4:00 P.M.
FILMORE'S FAVORITES	DECK 11, Mid 11:00 A.M. - 6:00 P.M.
LUIGI'S PIZZA	DECK 11, Mid 11:00 A.M. - 6:00 P.M.
ROYAL PALACE	DECK 3, Mid 12:00 P.M. - 1:30 P.M.
TOW MATER'S GRILL	DECK 11, Mid 11:00 A.M. - 6:00 P.M.
DINNER	
ANIMATOR'S PALACE	DECK 3, Aft 5:45 P.M. & 8:15 P.M.
ENCHANTED GARDEN	DECK 2, Mid 5:45 P.M. & 8:15 P.M.
ROYAL PALACE	DECK 3, Mid 5:45 P.M. & 8:15 P.M.
CABANAS TABLE SERVICE	DECK 11, Aft 6:30 P.M. - 8:30 P.M.
TOW MATER'S GRILL	DECK 11, Mid 6:00 P.M. - 11:00 P.M.
PALO & REMY (18+)	DECK 12, Aft 6:00 P.M. - 9:00 P.M.

(RESERVATION REQUIRED, & COVER CHARGE APPLICABLE. DIAL #7-9734)

LATE NIGHT (NIGHT)

LUIGI'S PIZZA	DECK 11, Mid 9:30 P.M. - 12:30 A.M.
THE DISTRICT	DECK 4, Aft 10:45 P.M. - 11:45 P.M.
ADDED FEATURES	
BEVERAGE STATION	DECK 11, Aft 24 HOURS
EYE SCREAM	DECK 11, Mid 11:00 A.M. - 12:30 A.M.
ROOM SERVICE	DIAL 0 24 HOURS

ENTERTAINMENT - LOUNGES - BARS

Adults must be 21 and older to consume alcoholic beverages.

687 PUB	DECK 4, Aft 5:00 P.M. - 9:00 P.M.
687 PUB (18+)	DECK 4, Aft 9:00 P.M. - 12:30 A.M.
BON VOYAGE	DECK 3, Mid 9:00 A.M. - 11:00 P.M.
COVE BAR (18+)	DECK 11, Fwd 10:30 A.M. - 11:00 P.M.
COVE CAFE (18+)	DECK 11, Fwd 7:00 A.M. - 6:00 P.M.
COVE CAFE WINE BAR (18+)	DECK 11, Fwd 6:00 P.M. - 12:00 MID
CURRENTS (18+)	DECK 13, Fwd 11:00 A.M. - 12:30 A.M.
D LOUNGE	DECK 4, Mid SHOWTIMES
DISTRICT LOUNGE	DECK 4, Aft 4:00 P.M. - 9:00 P.M.
DISTRICT LOUNGE (18+)	DECK 4, Aft 9:00 P.M. - 12:00 MID
EVOLUTION (18+)	DECK 4, Aft 9:30 P.M. - 2:00 A.M.
FROZONE TREATS	DECK 11, Mid 11:00 A.M. - 11:00 P.M.
MERIDIAN (18+)	DECK 12, Aft 5:00 P.M. - 12:30 A.M.
PINK (18+)	DECK 4, Aft 5:00 P.M. - 12:30 A.M.
OUTLOOK	DECK 14, Mid SUNSET TIME
SKYLINE (18+)	DECK 4, Aft 5:00 P.M. - 12:30 A.M.
VISTA CAFE	DECK 4, Mid 7:30 A.M. - 11:00 P.M.
WAVES	DECK 12, Aft 12:00 P.M. - 7:00 P.M.

Consumers who order raw or partially cooked, ready-to-eat food of animal origin, are hereby informed that the food is not sufficiently cooked to ensure its safety.

PORTADVENTURES

IMPORTANT INFORMATION
Please check your Port Adventure tour tickets for meeting times and locations. Visit the Port Adventures Deck 5, Midship, for any questions.

SHIP'S AGENT IN NASSAU
Nassau, Bahamas
R.H. Curry & Company, 303 Shirley St.,
P.O. Box N8168 Nassau, Bahamas
242-323-8425 or 242-357-9218

IMPORTANT NUMBERS
7-3001
Fire/Security: 7-3000
Medical Emergency: 7-1923
Health Center: 7-1923

All Ashore: Approx. 9:30 a.m.
All Aboard: 1:45 a.m.